

Welcome to Shenandoah

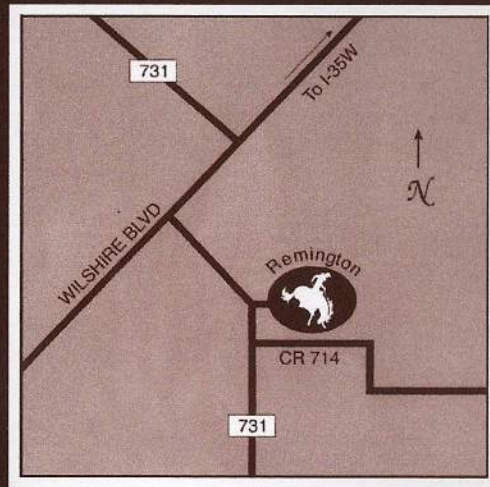
Imagine... a beautiful family oriented community with the benefits of small town living plus the advantages of upscale luxuries... all just minutes from the Dallas/Ft. Worth Metroplex. Shenandoah Townhomes is the perfect place to raise your family. Together, you can play tennis, enjoy a leisurely swim, work out in our fitness center, take a nightly stroll on the winding road within the community or simply enjoy the privacy of your own backyard. Not to mention that you will enjoy true townhome living with no neighbors above or below you. So... make the right move today, you and your family deserve the very best.

Luxuries and Comforts

- Spacious Townhome Living
- Attached Garage
- Ceramic Tile Entryway
- Full Size W/D Connections
- Energy Efficient
- Clothes Care Center
- Playground
- Fitness Center
- Sparkling Pool
- Beautiful Clubhouse
- Computer Learning / Business Center
- Basketball Sports Courts
- Tennis Court
- 24 Hour Emergency Maintenance
- Social Activities for all Ages
- Burleson Independent School District



*Affordable Housing Community
Income Limits Apply



1151 Remington Circle
(FM 731 and CR 714)
Burleson, TX 76028
(817) 295-1433
(817) 295-1318 Fax

www.shenandoahburleson.com



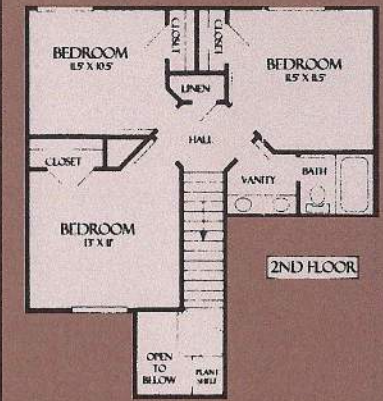
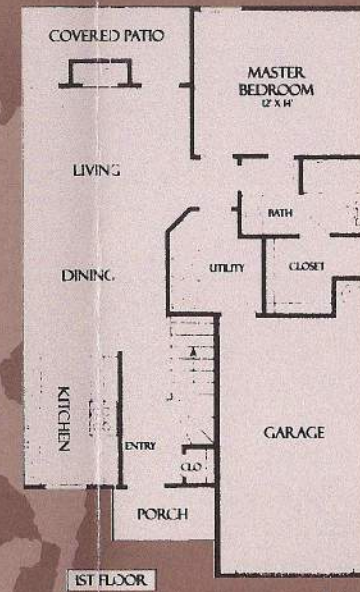
1151 Remington Circle
(FM 731 and CR 714)
Burleson, TX 76028
(817) 295-1433
(817) 295-1318 Fax

www.shenandoahburleson.com



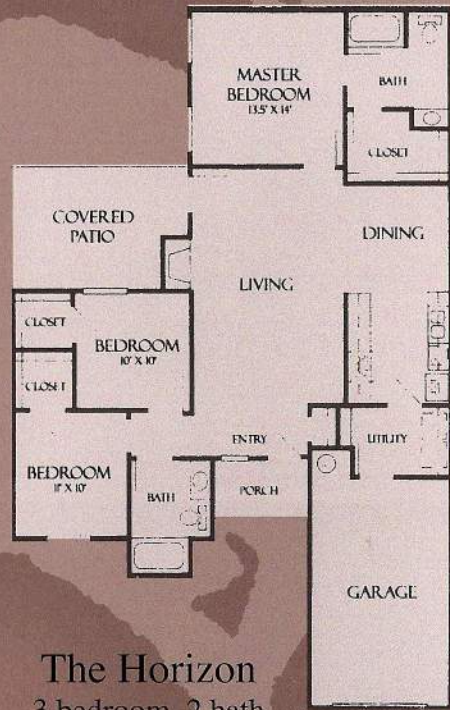
The Vision
 2 bedroom, 2 1/2 bath, 2 story
 1,200 Sq. Ft. plus 276 Sq. Ft. Garage

\$ _____



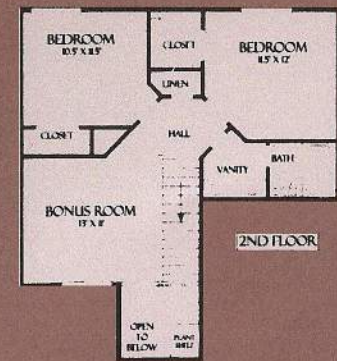
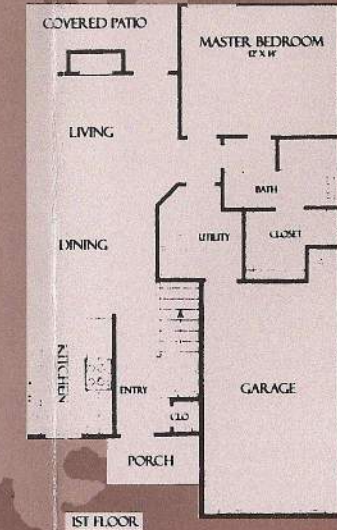
The Sunrise
 4 bedroom, 2 bath, 2 story
 1,439 Sq. Ft. plus 258 Sq. Ft. Garage

\$ _____



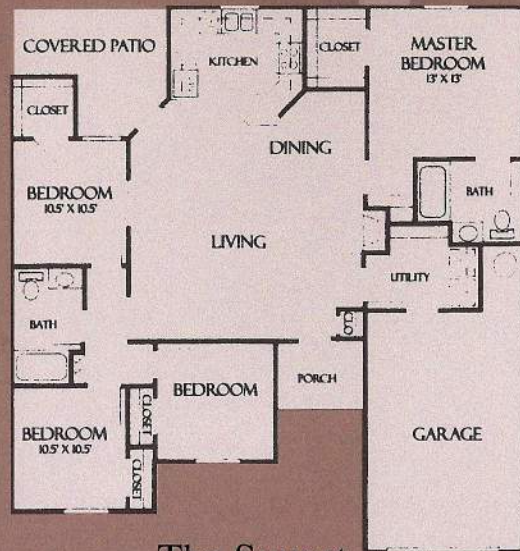
The Horizon
 3 bedroom, 2 bath
 1,318 Sq. Ft. plus 316 Sq. Ft. Garage

\$ _____



The Remington
 3 bedroom, 2 bath, 2 story, bonus room
 1,438 Sq. Ft. plus 300 Sq. Ft. Garage

\$ _____



The Sunset
 4 bedroom, 2 bath
 1,405 Sq. Ft. plus 300 Sq. Ft. Garage

\$ _____

Square footage is approximate and plans may vary.